

Multiplying the Benefits of Information-Based Technology through Creativity



Mary Poulton, Director,
Lowell Institute for Mineral Resources

On behalf of
Dr. Sean Dessureault and
Rosa Maria Rojas

www.imr.arizona.edu

Largest interdisciplinary mineral resources research program in US

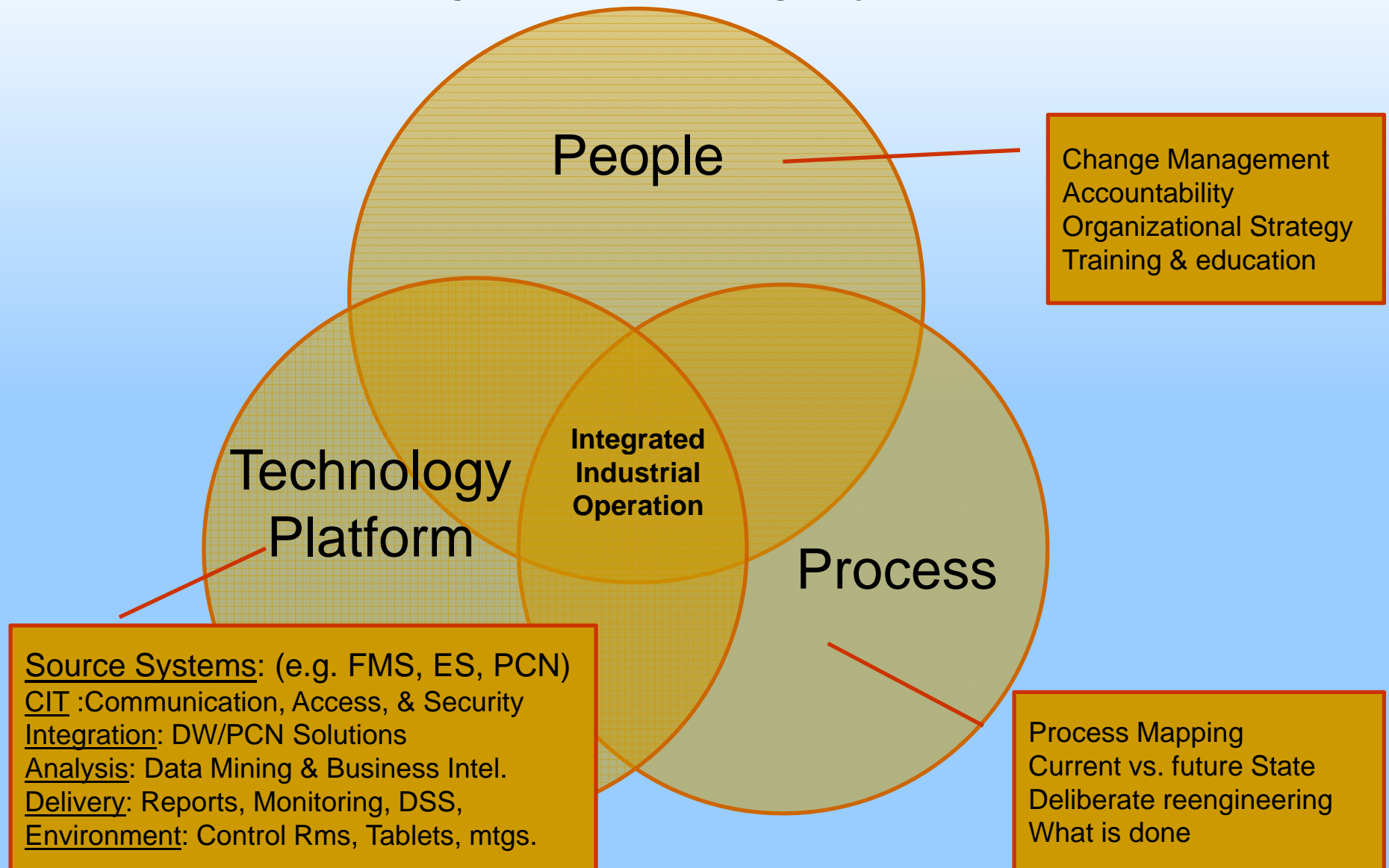


- Project Portfolio
 - Water (3)
 - Energy (4)
 - Technology (9)
 - Geology (36)
 - Health & safety (9)
 - Environmental (7)
 - Social license (3)
- 500 participants in 2011 in IMR research and education activities
- Training and outreach to >8,500 people per year
- Transferring knowledge and technology world wide

Mine Intelligence Research Group (MIRG)

- Resources
 - 25 researchers
 - Operations center & programming center
 - DWs from 26 different mines & live streams
- Cutting-edge systems integration
 - Real-time Apps
 - Decision support systems
 - Control room design and training
 - Dynamic simulation
 - Re-engineering frontline supervision
 - Sustainable development risk analysis
 - Metal/NonMetal, coal, underground & surface

Integrated Mining Systems



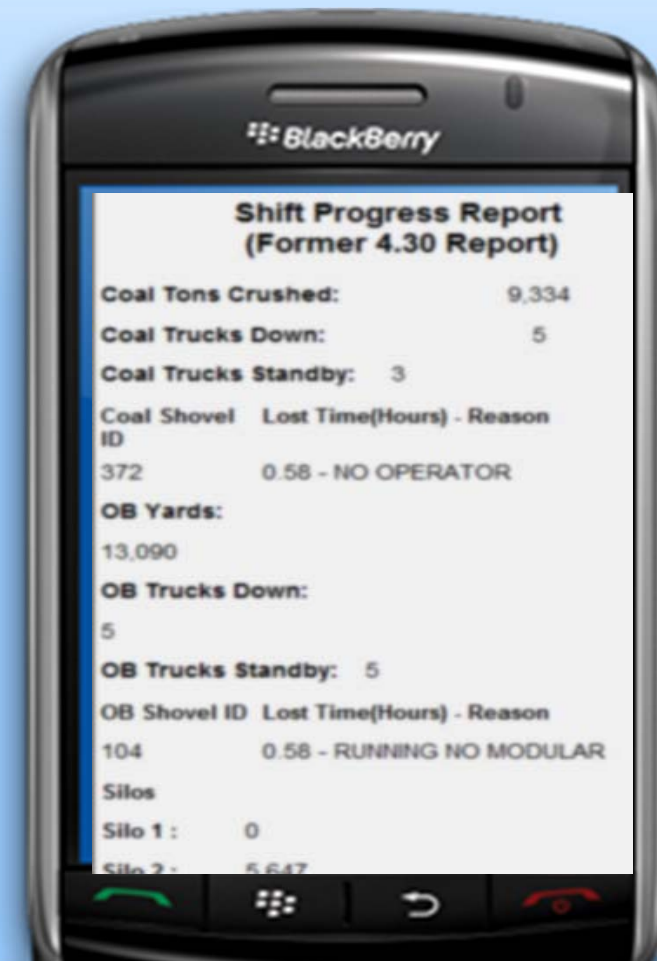
Breaking Down Data Silos (Knowledge Isolation)

- We know that people should interact across the operations
- But we do not let all our data interact across the operations
- We connect people but isolate data



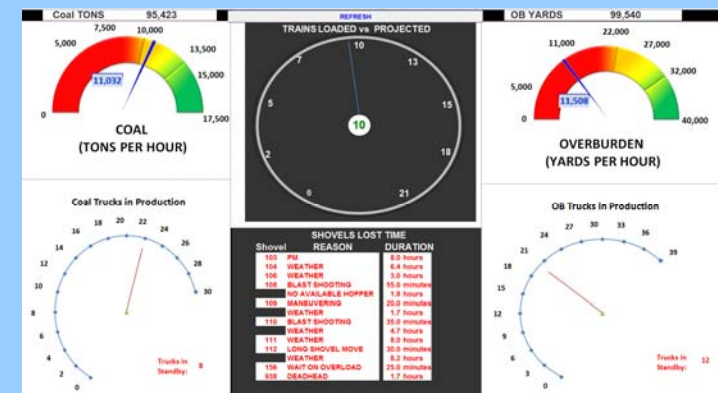
The "Connection Age"

- We are moving from the "Information Age" to the "Connection Age"
- New creative ways to connect
 - sensors
 - data
 - information
 - knowledge
 - people
 - action

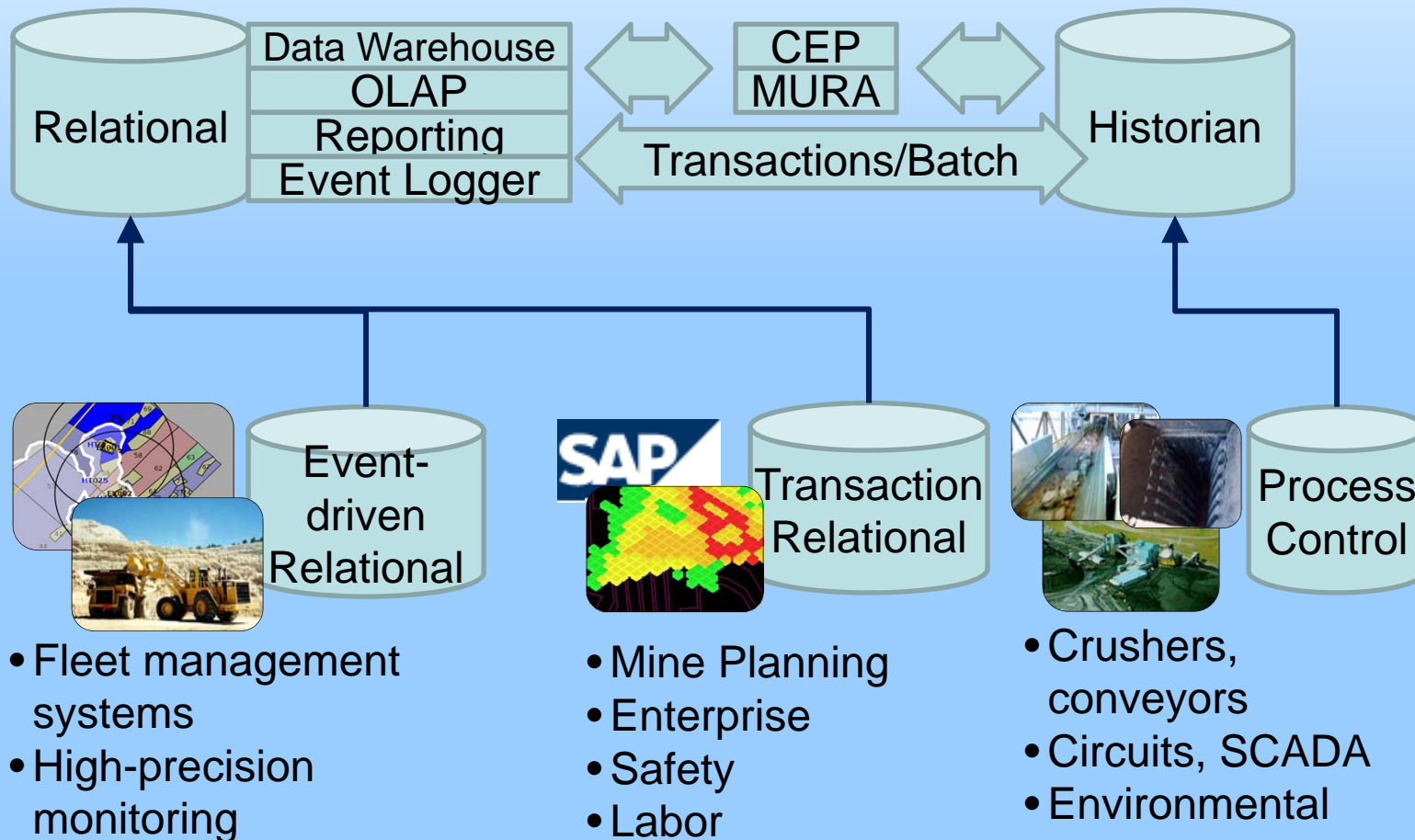


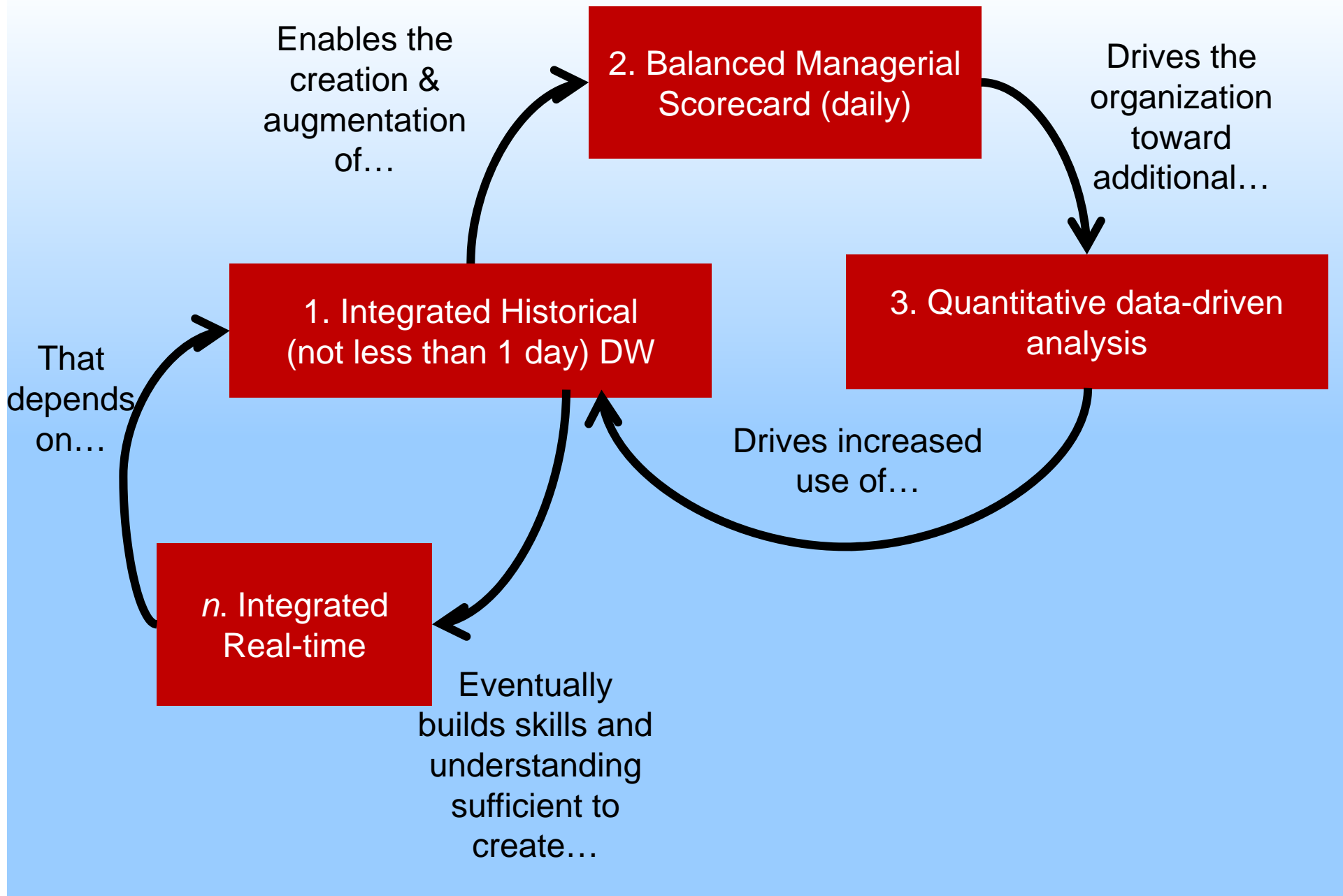
Our Approach

- Integrated, distributed data backbone across vendor databases => "Cloud"
- Customer focused "Apps" delivered to portable devices
- Integrated operations centers
- Real time simulation of complex operations
- Information when and where you need it
- Manage social license
- Change management and education



Data → Information Network → Demand → Knowledge → Implementation





Mine Information Research Group Integrated Operations Center Laboratory



BI Tools

BI Purpose

1. Dashboards (Status)

2. Real Time Analysis & Decision Support (IOC SCREENS)

3. Integrated shift-to-date reports (gen.)

4. Balanced Managerial Scorecard (daily)

5. Balanced Operator Scorecard (d/w/m)

- Ad-hoc Analysis (OLAP as-needed)

- Advanced Historical Analysis

- Data Mining

Increasing Time Scale

Immediate

After-action

Do I need to look more into something or make a decision??

Help make a prediction / trend of shift to take corrective action or optimize. Most often in Integrated Operations Centers (IOC).

Mid-game (shift) score for management – do I need to intercede?

Manager meeting to identify areas in need of attention through performance reports

Feedback to operators on their individual / crew performance

To understand more details or create models for improvement options.

To investigate root-causes or implement “KNOWLEDGE” programs, i.e. M2M

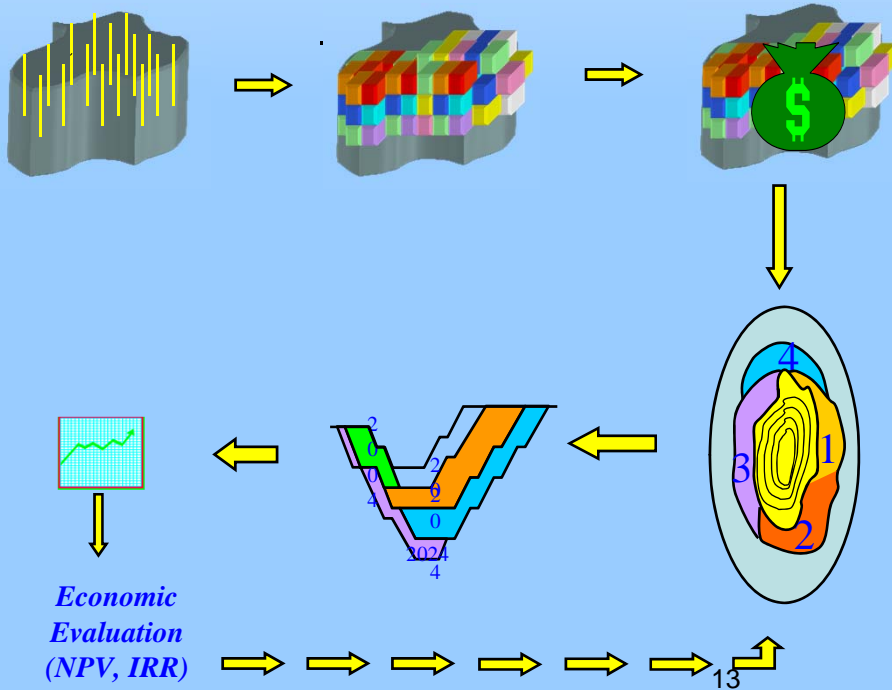
Advanced Business Intelligence Real-time Data

- Mine Plan Integration
- Re-engineering frontline management
- Advanced business intelligence
 - Early warning measures
 - Real time fleet costing
 - Fragmentation
 - Blending
 - Dynamic simulator
 - Decision support system
 - Adherence to mine plan
 - Fatigue management
 - Assignment of personnel



Advanced Business Intelligence Historical Data

- Mine to Leach Data Integration
- Waste to ore management
- Block caving analysis, planning, and management



- Automated reports from OLAP cubes
- Activity based costing
 - Equipment replacement analysis
- Data-rich truck fleet management
- Tire management
- Fuel management

Simulator: A shovel goes down

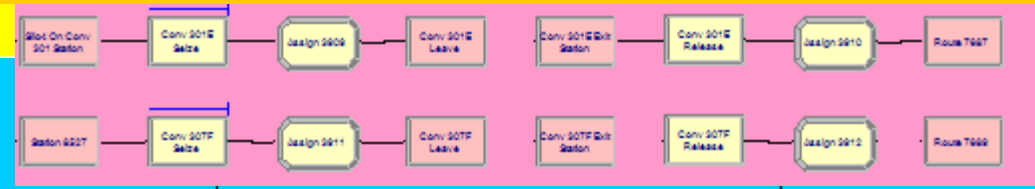
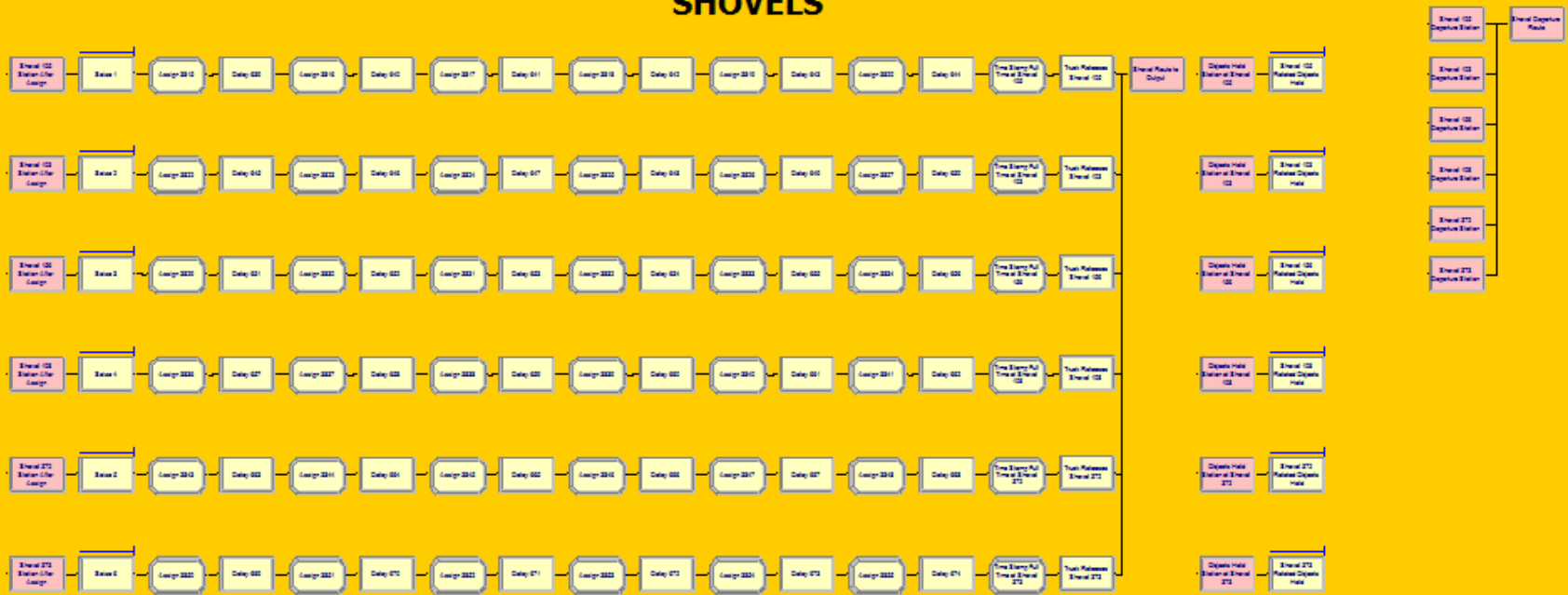


where to
assign
the
trucks?



Simulation Model: ARENA

SHOVELS



Disposal 02



NOW

HISTORICAL

Last Updated (NOW) Time
2/21/2012 15:52

Enter Historical date below

Month	Day	Year	Hour	Minute	Second
	1	28	2011	7	30

MANUAL INPUTS

LEGEND

List of Active Trucks and Sizes
(Dispatch Required)

Active Pits

Truck Full Haul Times

Truck Empty Haul Times

Hopper-Silo Connections
(Dispatch Required)

Blend Set Points (NOW)
(Dispatch Required)

Blend Set Points (HISTORICAL)
(Dispatch Required)

Train ETA
(Dispatch Required)

Train-Car Sequence (NOW)

Train-Car Sequence (HISTORICAL)

Silo 1 Contents

Silo 2 Contents

Silo 3 Contents

Silo 4 Contents

Silo 5 & Barn Contents

Silo Objects

Circuit Stations

Circuit Features

Blending Conveyor Stations

Blending Conveyor Features

- (Dispatch Required) Sheets mandatorily requiring options for dispatch
- Place mandatorily requiring options to be entered by user
- NOW information
- HISTORICAL information
- Most recently validated manual input

OPEN AUTO GENERATOR

VALIDATE INPUTS (NOW)

VALIDATE INPUTS (HISTORICAL)

Truck & Dozer both Tele & Autonomous



Stakeholder listening

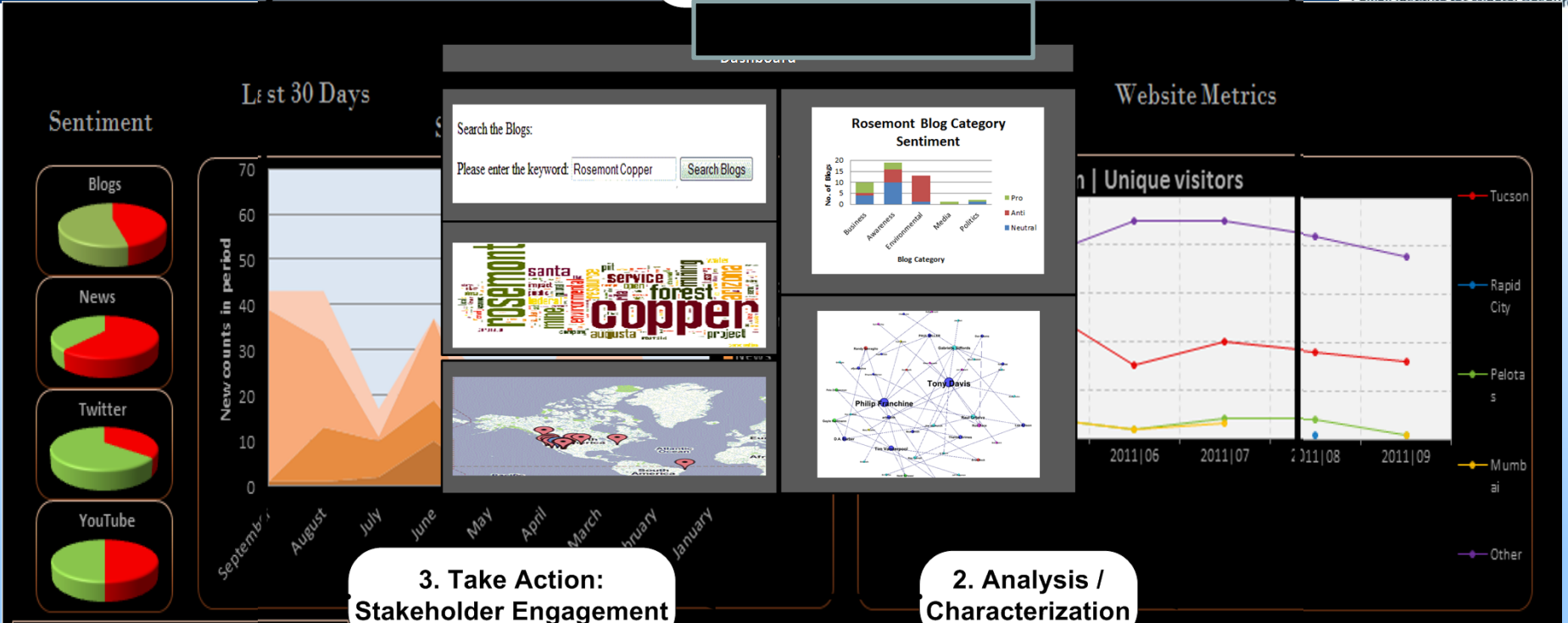
Mitigation Objectives

Risk identification

Monitoring / analysis

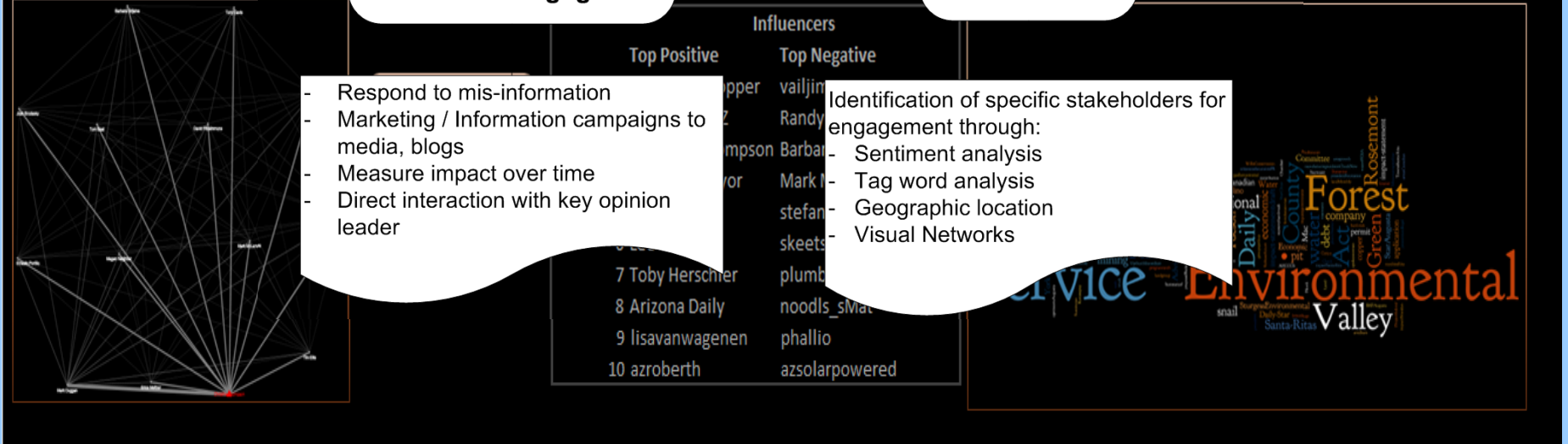


1. Monitoring



3. Take Action: Stakeholder Engagement

2. Analysis / Characterization



Change Management & Education



- Technology “black belts”
 - Employees get advanced education and generate the ideas
- Stay current with continuing education
 - Hands on technology curriculum with short courses
- Champion change in organization
 - “See – Do – Teach”

Gracias!

